

# Cruise Instructions to GOOTC 2009



## ITENERARY:

- 06:30AM-07:00AM: Meet at the White Marsh Park-n-Ride [A]  
07:00AM-08:00AM: Cruise from White Marsh, MD [A] to Bowie, MD [B]  
08:00AM-08:30AM: Meet at the Lowes Parking Lot [B]  
08:30AM-09:30AM: Cruise from Bowie, MD [B] to LaPlata, MD [C]  
09:30AM-10:00AM: Meet at the Best Western Hotel parking lot [C]  
10:00AM-10:30AM: Cruise from LaPlata, MD [C] to MD Int'l Raceway, MIR [D]  
10:30AM-11:00AM: Get everyone paid & into the facility  
11:00AM: Event officially begins

## DIRECTIONS:

### Stop-A to Stop-B

1. Leave the Park-n-Ride
2. Turn left onto Honeygo Blvd
3. Turn Right onto MD-43, White Marsh Blvd
4. Stay in right lane & merge onto I95 South
5. Merge into left 2 lanes on I95
6. Take I895 south at the split
7. Go Thru tunnel & toll plaza (\$2 toll)
8. Take exit for I97 connector
9. Take exit for I97 south
10. Go about 10-miles on I97
11. Take exit 7 for MD-3 south
12. Merge onto MD-3 south
13. Continue on MD-3 for 10 miles
14. Go past RT-50 overpass
15. Turn right at Heritage Blvd
16. Turn right into the Lowes parking lot

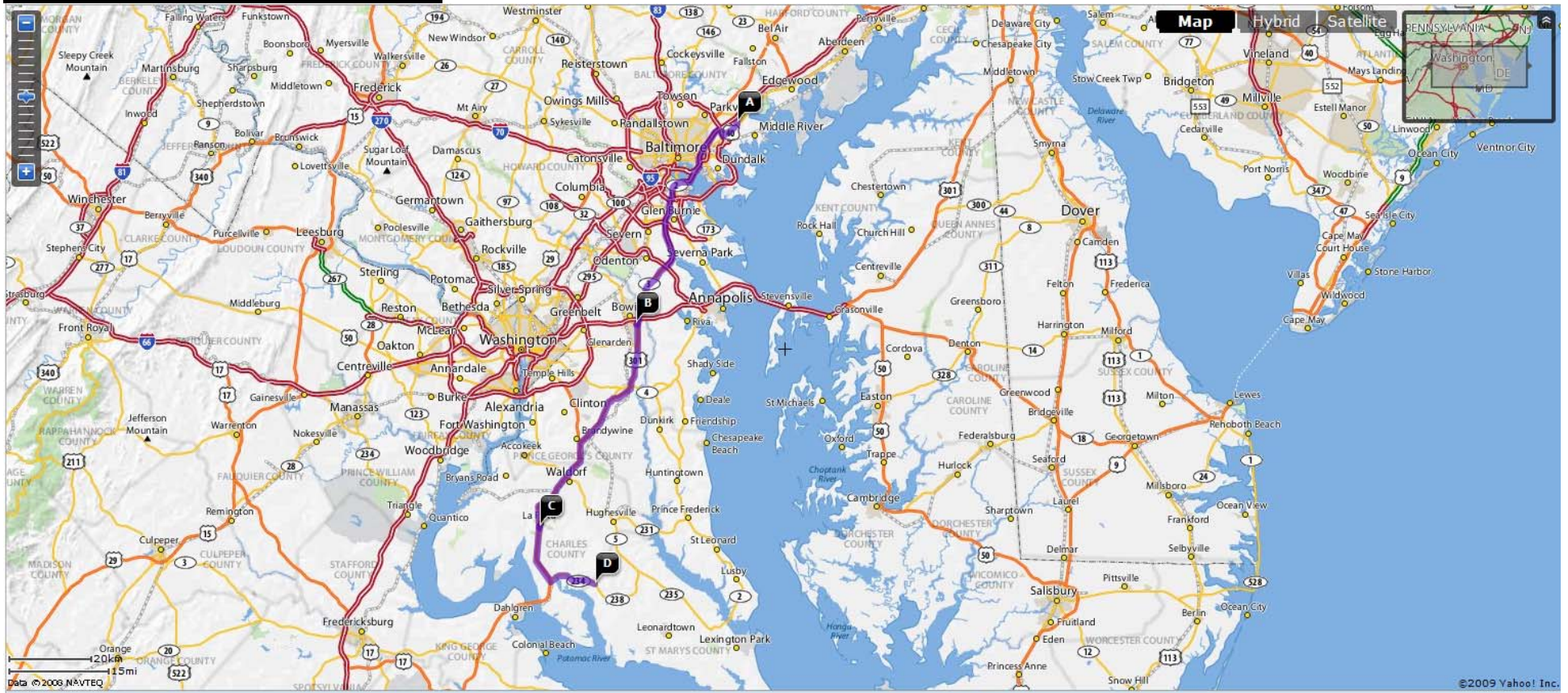
### Stop-B to Stop-C

1. Leave the Lowes parking lot
2. Turn right onto Heritage Blvd
3. Turn right onto MD-3/US-301 south
4. Continue 35-miles on MD-3/US-301
5. Make a U-turn at Glen Albin Rd onto MD-3/US-301 north
6. Turn right into the Best Western Hotel parking lot

### Stop-C to Stop-D

1. Leave the Best Western parking lot
2. Turn right onto MD-3/US-301 north
3. Make a U-turn at Charles St onto MD-3/US-301 south
4. Continue on MD-3/US-301 south for 9-miles
5. Turn left at MD-234/Budds Creek Rd
6. Continue on MD-234/Budds Creek Rd for 6.9-miles
7. Turn right into MIR

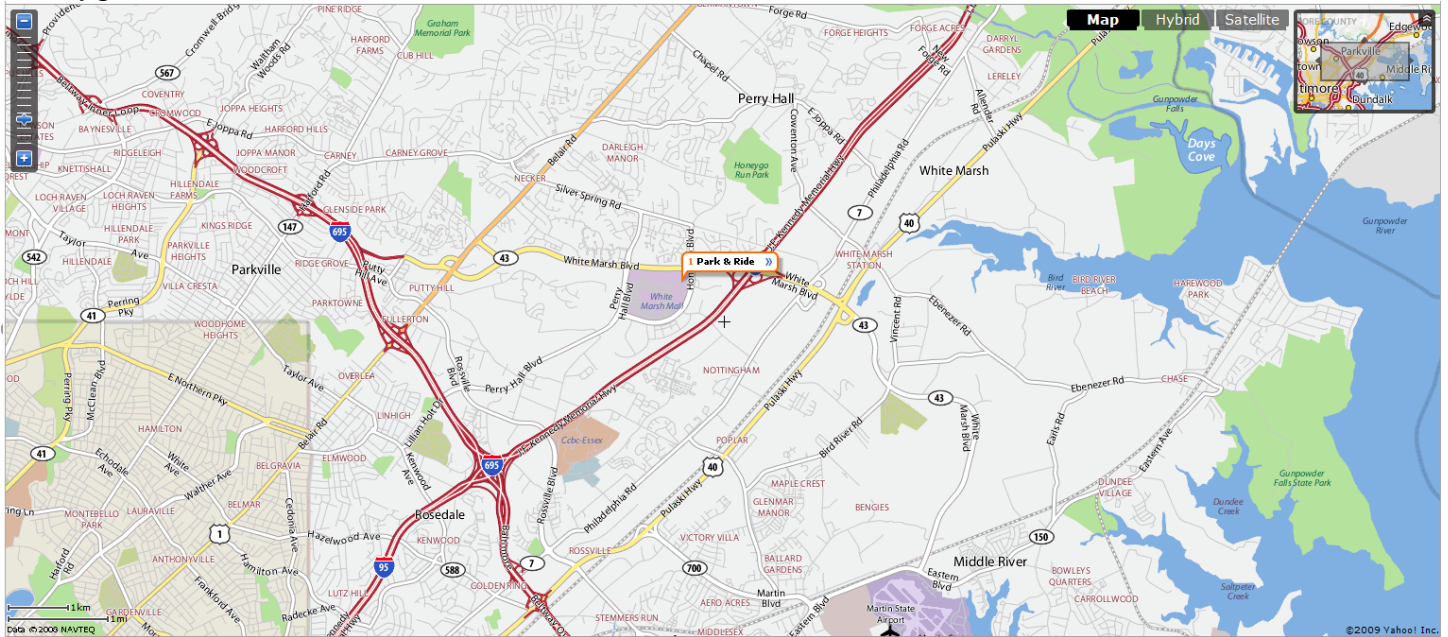
# OVERALL CRUISE MAP





# ADDRESSES:

## STOP-A: White Marsh Park-n-Ride Honeygo Blvd, White Marsh, MD



## STOP-B: Lowes Parking Lot 16301 Heritage Blvd., Bowie, MD 20716

